

# COLOR

A HOUSE MAY HAVE GREAT BONES, and the addition of color, in fabrics, artworks and objects certainly makes a room come alive. But the quickest way to change the very *character* of a space is paint and wallcovering. A city home, finished well, can be sedate to awe-inspiring. Where you let your rooms go is entirely up to your imagination, as the combinations are quite literally endless.

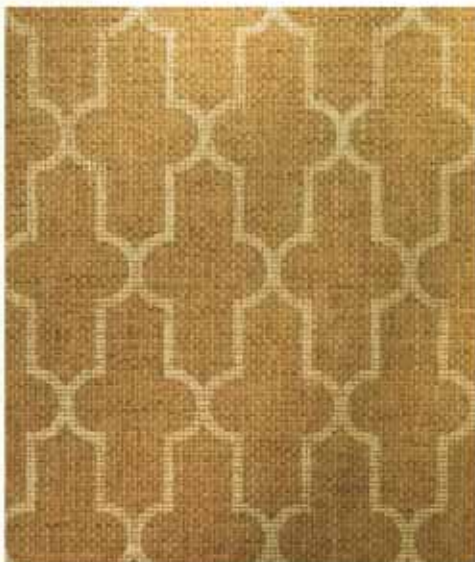
We asked one design team, Andrew Terrat and Dee Elms of Terrat /Elms Interior Design to give us a few of their newfound favorites. They like the texture of the new offerings from Phillip Jeffries and Maya Romanoff as well as some of the naturals available through Schumacher. With a decidedly modern bent, they are also finding use for bold geometrics like those of the design studio known as twenty2.

Take a pattern that might have been born in the Arts & Crafts era, blow it up 200% and print it in a delicious shade of café au lait, and you have the *Lotus* pattern from Farrow & Ball. Available through Johnson Paint Co.



**ALSO:** No matter which wallcoverings you choose, take the time to find complimentary paint for trimwork, built-ins and even adjoining rooms. We especially like the slightly aged look of Donald Kaufman Color. Available through Johnson Paint Co.

All The Home's A Stage: Choosing Paints and Papers



### *I Dream of Jeannie*

Voyage Collection from Phillip Jeffries is Japanese woven paper. Shown here is Moroccan. Available through your designer at Webster & Company.

**ALSO:** As obvious as it might seem, place all your test samples, fabric swatches, wallpaper samples and paint test boards in the room you'll be using them in and sit with them for a couple days. Sometimes something as simple as a cloudy day will move you to adjust your choices.



### *Summer of '42*

Taking natural to a whole new level. Real, skeletonized leaves on a dark background. Available through your designer at F. Schumacher & Co.



### *Marie Antoinette*

Soft, metallic background screened with calligraphic designs. Handsome in an entry hall or powder room. *Quill* by Dennis Lee for Tyler Hall. Available through your designer at Webster & Company.

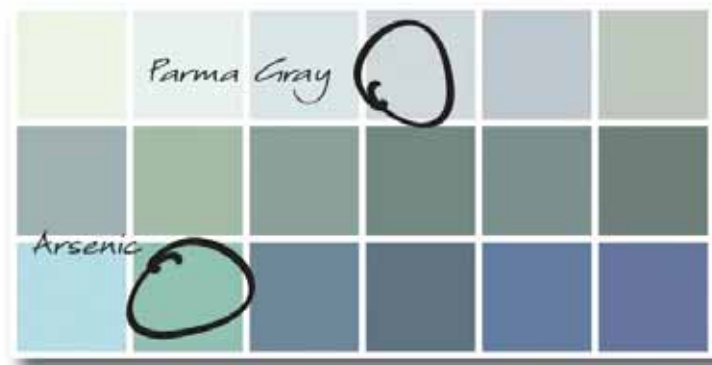


MOST DESIGNERS ARE FAMILIAR WITH THE BASICS ON WALLCOVERINGS: They worry about the repeat of a pattern and measure walls accordingly for a drop match or a straight match. They know to direct the prepping and priming of walls for paper and have a good idea when to line the walls and when lining is not required. Design Center showrooms such as Webster or Schumacher are very careful to get their design clients wallcoverings with the same run or dye lot number so the color is absolutely consistent. Leaving all of that – including the installation – to the professionals releases you from worry and lets you concentrate on getting just what you want, from a simple stripe for a guest bedroom to silver leaf for a dining room. Andrew Terrat and Dee Elms love to mix custom wood paneling with textured wallcoverings like the *Juicy Jute* grasscloth series or the razor-thin Japanese cork, both from Phillip Jeffries.

COLOR HAS AMAZING POWERS. It has the power to make a room and its occupants feel vibrant, or the power to sooth. It can subtly suggest 100 years of age or make a room look as fresh as spring grass. Suffice it to say there are a lot of choices out there. Benjamin Moore's Historical Selects collection has been around for years and is still a huge seller. Their new premium Aura line has the amazing ability to cover easily, and according to Bob Johnson of Johnson Paint Company, its low VOC (volatile organic compounds) quality is a big plus with customers. In fact, Johnson also carries Moore's Natura line, which is a zero VOC paint for those who demand a 100% green product.

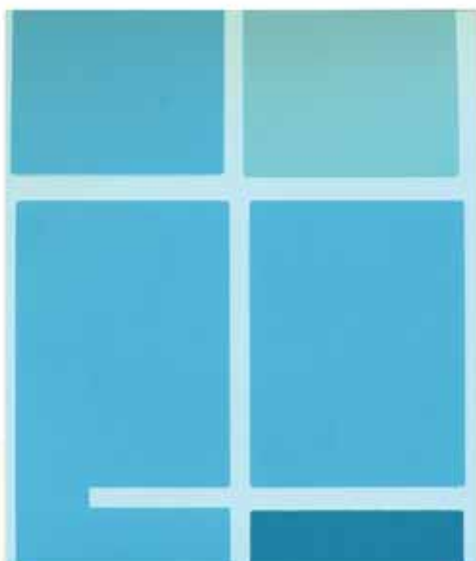
Top of the line paints Johnson says are doing well with both designers and customers off the street are the paints from Donald Kaufman as well as the Farrow & Ball collection. Farrow & Ball has moved toward the green paints category as well, eliminating their oil based line as of January of this year. With over 130 colors in subtle tones like Parma Gray and Arsenic (seen at right) Farrow and Ball have quickly become the go to guys for color.

**ALSO:** While wallcoverings might set you back a good deal, paint - even the finest - will not. Our favorite collection of color at the moment, from manufacturer Farrow & Ball, has amazingly subtle variations. Whether you are picking a color and a finish to work with wallcovering or simply choosing to paint an entire room, these custom colors can't be beat. Available at Johnson Paint Co.



### Adult Swim

Hand screened on vinyl-coated paper is Acco 20, shown here in neptune. Available through your designer. To see more, go to [twenty2.net](http://twenty2.net).



### South Pacific

From Phillip Jeffries Ltd. comes Juicy Jute grasscloth wallcovering, shown here in tantalizing teal. Through your designer at Webster & Company.



### Mad Men

Also from Phillip Jeffries is their new Horsehair collection, which looks exceedingly dapper in grey. Through your designer at Webster & Company.

